

# ROYAL FILTERMIST REPLACEMENT PARTS



## Serial Number Label

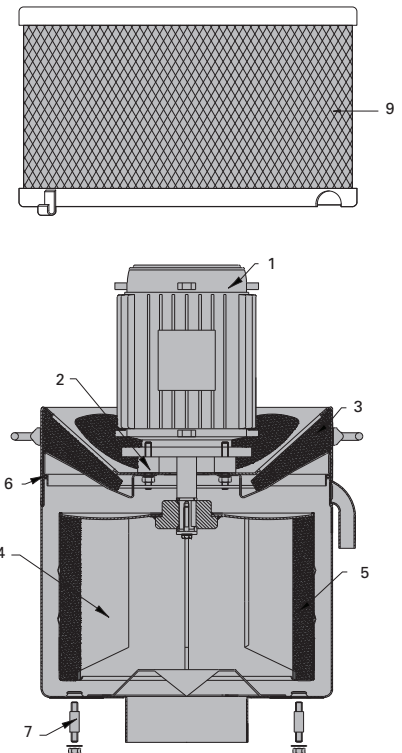
On this unit, the white label with the black text indicates a series 8 model.

Royal Products offers a full array of replacement parts for all Filtermist models. When ordering replacement parts, it is very important that you identify the correct series and model. The series is determined by the color of the serial number label, located on the upper portion of the housing near the motor. The color code is as follows:

- Series 6 — Black label, silver text.
- Series 8 — White label, black text.
- Series 7 — Yellow label, black text.
- FX Series — Blue label, white text.

## FX Series Only

| ITEM NUMBER | DESCRIPTION  | FILTERMIST MODEL | BLUE LABEL (FX Series) |
|-------------|--|------------------|------------------------|
| 1           | <b>Motor</b>   | FX-275/300       | 30450                  |
|             |  | FX-550/575       | 30450                  |
|             |  | FX-600           | 30452                  |
|             |  | FX-900           | 30454                  |
|             |  | FX-1200          | 30454                  |
| 2           | <b>Motor Mount Set</b><br>Includes four mounts and required hardware.  | FX-275/300       | 30440                  |
|             |  | FX-550/575       | 30440                  |
|             |  | FX-600           | 30442                  |
|             |  | FX-900           | 30442                  |
|             |  | FX-1200          | 30442                  |
| 3           | <b>Silencer</b>  | FX-275/550       | 30420                  |
|             |  | FX-300/575       | 30520                  |
|             |  | FX-600           | 30422                  |
|             |  | FX-900           | 30422                  |
|             |  | FX-1200          | 30422                  |
| 4           | <b>Drum</b>  | FX-275           | 30460                  |
|             |  | FX-300           | 30560                  |
|             |  | FX-550           | 30466                  |
|             |  | FX-575           | 30566                  |
|             |  | FX-600           | 30462                  |
|             |  | FX-900           | 30462                  |
|             |  | FX-1200          | 30464                  |
| 5           | <b>Drum Pads (set of 4)</b>  | FX-275/300       | 30410                  |
|             |  | FX-550/575       | 30416                  |
|             |  | FX-600           | 30412                  |
|             |  | FX-900           | 30412                  |
|             |  | FX-1200          | 30414                  |
| 6           | <b>Housing Seal</b>  | FX-275/300       | 30430                  |
|             |  | FX-550/575       | 30430                  |
|             |  | FX-600           | 30432                  |
|             |  | FX-900           | 30432                  |
|             |  | FX-1200          | 30432                  |
| 7           | <b>Direct Mounting Kit</b><br>Includes collar seal, mounts, and required hardware.                                       | FX-275/300       | 30299                  |
|             |  | FX-550/575       | 30299                  |
|             |  | FX-600           | 30300                  |
|             |  | FX-900           | 30302                  |
|             |  | FX-1200          | 30304                  |
| 8           | <b>Complete Maintenance Kit</b><br>Includes items 2, 3, 5 and 6.   | FX-275           | 30400                  |
|             |  | FX-300           | 30500                  |
|             |  | FX-550           | 30406                  |
|             |  | FX-575           | 30506                  |
|             |  | FX-600           | 30402                  |
|             |  | FX-900           | 30402                  |
|             |  | FX-1200          | 30404                  |
| 9           | <b>Complete After Filter</b><br>Fits over the Filtermist motor. Includes 1-pc. housing/filter element, and toggle clips. | FX-275/300       | 30200/30203*           |
|             |  | FX-550/575       | 30200/30203*           |
|             |  | FX-600           | 30205/30204*           |
|             |  | FX-900           | 30205/30204*           |
|             |  | FX-1200          | 30205/30204*           |



**NOTE** – The parts on this page are for Filtermist FX Series models with a blue serial number label. If you have an older model Filtermist unit with a white, yellow, or black serial number label, please see page 166.

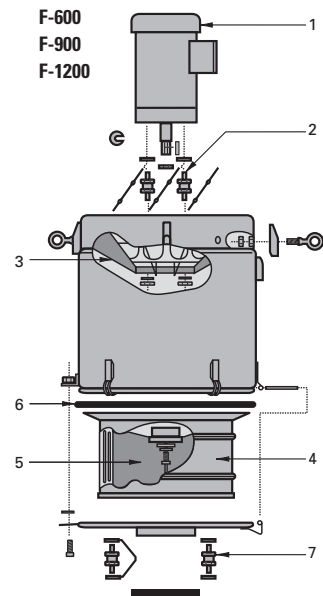
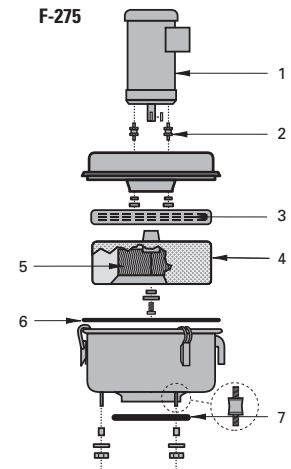
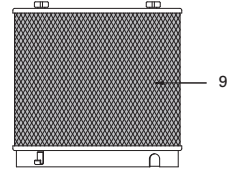
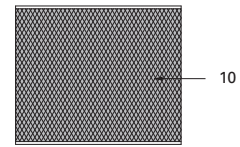
\*Standard and high-performance models available.



# ROYAL FILTERMIST REPLACEMENT PARTS – OLDER MODELS

## Series 6, 7, and 8 (Pre-2004)

| ITEM NUMBER | DESCRIPTION   | FILTERMIST MODEL | WHITE LABEL (Series 8) | YELLOW LABEL (Series 7) | BLACK LABEL (Series 6) |
|-------------|---|------------------|------------------------|-------------------------|------------------------|
| 1           | Motor   | F-275            | 30450                  | 30450                   | 30450                  |
|             |   | F-600            | 30452                  | 30452                   | 30452                  |
|             |   | F-900            | 30454                  | 30454                   | 30454                  |
|             |   | F-1200           | 30454                  | N/A                     | N/A                    |
| 2           | Motor Mount Set<br>Includes four mounts and required hardware.  | F-275            | 30440                  | 30440                   | 30440                  |
|             |   | F-600            | 30442                  | 30442                   | 30442                  |
|             |   | F-900            | 30442                  | 30442                   | 30442                  |
|             |   | F-1200           | 30442                  | N/A                     | N/A                    |
| 3           | Silencer  | F-275            | 30420                  | 30420                   | 30420                  |
|             |   | F-600            | 28181N                 | 28181N                  | N/A                    |
|             |   | F-900            | 28181N                 | 28181N                  | N/A                    |
|             |   | F-1200           | 28181N                 | N/A                     | N/A                    |
| 4           | Drum  | F-275            | 30460                  | 30460                   | 30460                  |
|             |   | F-600            | 28167                  | 28167                   | 28167                  |
|             |   | F-900            | 28167                  | 28166                   | 28166                  |
|             |   | F-1200           | 28166                  | N/A                     | N/A                    |
| 5           | Drum Pads (set of 4)  | F-275            | 30410                  | 30410                   | 30410                  |
|             |   | F-600            | 28209                  | 28212                   | 28212                  |
|             |   | F-900            | 28209                  | 28210                   | 28210                  |
|             |   | F-1200           | 28207                  | N/A                     | N/A                    |
| 6           | Housing Seal  | F-275            | 28176                  | 28176                   | N/A                    |
|             |   | F-600            | 28178N                 | 28178N                  | N/A                    |
|             |   | F-900            | 28178N                 | 28178N                  | N/A                    |
|             |   | F-1200           | 28178N                 | N/A                     | N/A                    |
| 7           | Direct Mounting Kit<br>Includes collar seal, mounts, and required hardware.                                     | F-275            | N/A                    | N/A                     | N/A                    |
|             |   | F-600            | N/A                    | N/A                     | N/A                    |
|             |   | F-900            | N/A                    | N/A                     | N/A                    |
|             |   | F-1200           | N/A                    | N/A                     | N/A                    |
| 8           | Complete Maintenance Kit<br>Includes items 2, 3, 5 and 6.   | F-275            | 28008                  | 28008                   | N/A                    |
|             |   | F-600            | 28015                  | 28007                   | N/A                    |
|             |   | F-900            | 28015                  | 28006                   | N/A                    |
|             |   | F-1200           | 28017                  | N/A                     | N/A                    |
| 9           | Complete After Filter<br>Fits over the Filtermist motor.<br>Includes housing, filter element, and toggle clips. | F-275            | 30200                  | 30200                   | 30200                  |
|             |   | F-600            | 28164                  | 28164                   | 28164                  |
|             |   | F-900            | 28164                  | 28164                   | 28164                  |
|             |   | F-1200           | 28164                  | N/A                     | N/A                    |
| 10          | After Filter — Replacement Element Only   | F-275            | 28159                  | 28159                   | 28159                  |
|             |   | F-600            | 28165                  | 28165                   | 28165                  |
|             |   | F-900            | 28165                  | 28165                   | 28165                  |
|             |   | F-1200           | 28165                  | N/A                     | N/A                    |
| 11          | Drum Puller   | All Units        | 28014                  | 28014                   | 28014                  |



For all other replacement parts, please contact us at 1-800-645-4174.

**NOTE** — The parts on this page are for older series Filtermist units sold thru mid 2004. See page 165 for Filtermist FX Series components.