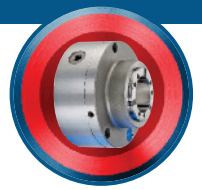


ROYAL KEY-OPERATED QUICK-GRIP™ COLLET CHUCK FOR MANUAL LATHES

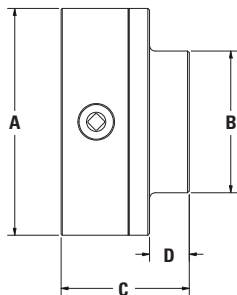


NEW



Note – Collets sold separately

- Now you can enjoy the same great features of the Royal Quick-Grip™ CNC Collet Chuck on your manual engine lathes, including ten-second collet changes and parallel-grip collets with a full .062" clamping range.
- No hydraulic actuator needed – chuck is operated with a traditional square-drive chuck key (included) via a side-access screw.
- In addition to manual lathe applications, this chuck can also be utilized on grinders, indexers, rotary tables, etc.
- By eliminating the drawtube and offering a full 2-5/8" thru capacity (compared to 1-1/16" of a 5C collet closer), users can make much better use of their lathe's spindle capacity.
- Very accurate – 0.0005" TIR guaranteed!
- Balanced to 4,000 rpm.
- Superior gripping force – approximately 300% greater than our 5C pneumatic collet closer.
- Order backplate separately. Other backplate styles available as custom order.
- For use with Royal QG-65 collets (pages 22-23).
- Note – this product is specifically designed for use on manual equipment not equipped with a hydraulic actuator. For CNC lathes, better performance will be achieved through the use of Royal CNC Collet Chucks.



Royal Key-Operated Quick-Grip™ Collet Chuck for Manual Lathes*

MODEL	CAPACITY	A	B	C	D	PART NUMBER	PRICE
QG-65	2.66	7.87	4.92	4.45	1.38	43920	\$3,785

*Order backplate and collets separately.

Backplates for Key-Operated QG Lathe Chuck

MODEL	PLATE DIAMETER	PLATE THICKNESS	PART NUMBER	PRICE
A2-5	7.87	1.10	43930	\$693
A2-6	7.87	1.18	43932	761
D1-5	7.87	1.60	43934	883
D1-6	7.87	1.85	43936	1,059

- Hardened and precision ground.
- Backplates accept Royal Quick-Grip™ stops featured on page 16.