



# ROYAL FILTERMIST MOUNTING OPTIONS

A wide variety of mounting options makes the Royal Filtermist very easy to install. If you have any questions regarding mounting, please contact one of our applications engineers at 1-800-645-4174.

	FX-300	FX-575	FX-900	FX-1200
<b>Direct Mount</b>	✓	✓	✓	✓
<b>Suspended</b>	-	-	✓	✓
<b>Floor Stand</b>	✓	✓	✓	✓
<b>Machine Top Stand</b>	✓	✓	✓	✓
<b>Wall Mount</b>	✓	✓	✓	✓
<b>Machine Side Mount</b>	✓	✓	✓ *	✓ *

\* Can be accomplished using either wall bracket or modified floor stand.



## Direct Mount

Typically used on enclosed machines such as CNC lathes. All Filtermist models can be mounted this way, but it is important to make sure that the mounting location is well suited to the application and does not interfere with any machine components.



## Suspended Mount

Eye bolts included with the FX-900 and FX-1200 enable these units to be suspended from the factory ceiling. Suspension is a **low-cost mounting option** and is often the best choice for tall machines like large machining centers. Suspension is also a popular choice when a Filtermist unit will be servicing more than one machine.



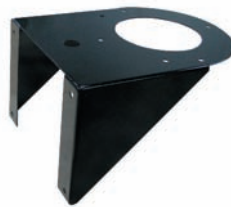
## Floor Stand

Floor stands are available for all models. The stand for models FX-300 and FX-575 is fixed at a height of 6 ft., while the stand for models FX-900 and FX-1200 can be adjusted from 6 ft. – 9 ft. Note that stands must be bolted to the factory floor to prevent tipping.



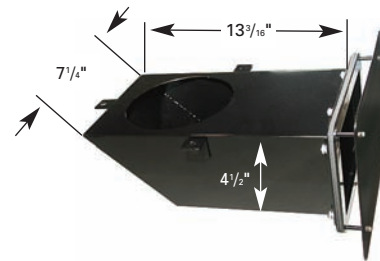
## Machine Top Stand

This 3 ft. high stand enables all models to be mounted to the top of a machine, but offers advantages over direct mounting with its **small footprint** and flexible intake positioning.



## Wall Mount

Wall mount brackets are available for all models. Depending upon the machine, it may be possible to use the wall mount bracket to mount a Filtermist to the side of a machine tool.



## Machine Side Mount

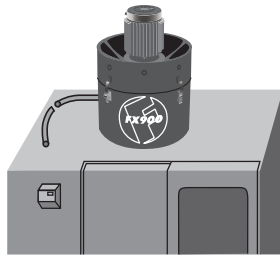
We offer a special side mount bracket for models FX-300 and FX-575 that enables a Filtermist unit to be mounted to the outside wall of a machine tool without the need for any ducting. A built-in deflector protects against chips and coolant splash.

# ROYAL FILTERMIST MOUNTING OPTIONS



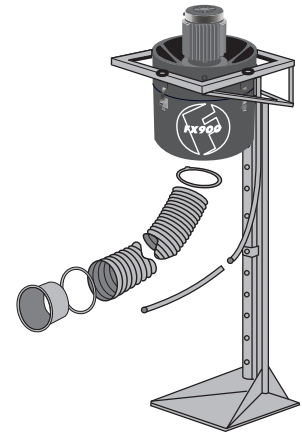
## DIRECT MOUNT

- Unit
- Direct Mounting Kit
- Coolant Return Hose



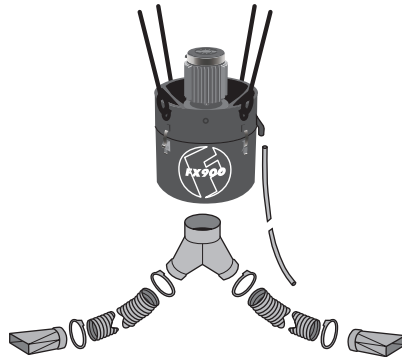
## FLOOR STAND MOUNT

- Unit
- Floor Stand
- Coolant Return Hose
- Ducting
- Hose Clamps (2)
- Flange Adapter



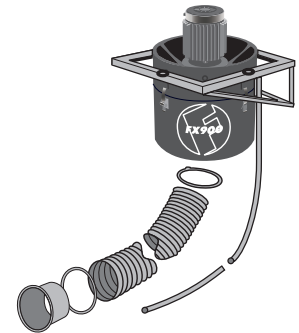
## SUSPENDED MOUNT

- Unit
- Suspension Kit
- Coolant Return Hose
- Hose Clamps (4)
- Y-Junction
- Ducting
- Fishtails

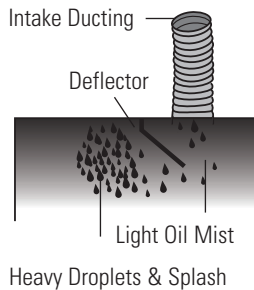


## WALL MOUNT

- Unit
- Wall Bracket
- Coolant Return Hose
- Hose Clamps (2)
- Ducting
- Flange Adapter



## Intake Position — Very Important



When installing a Filtermist unit, be sure to locate the intake in a position where it will collect mist, not splash. A common mistake is to locate the collection point too close to the cutting action, causing raw coolant and chips to be drawn into the unit. For example, the intake on a CNC lathe should be located near the tailstock-end of the machine, not over the chuck. Whenever possible, draw the mist across the enclosure from an area of heavy concentration to an area of lighter concentration.

For machines where the intake must be positioned near the cutting action, a deflector is often necessary (see page 141). A deflector protects the intake from chips and coolant yet allows mist and smoke to pass around it for collection.

## Accessories

UNIT	INTAKE DIAMETER
FX-300	6"
FX-575	6"
FX-900	6"
FX-1200	8"

Royal Products offers a full array of mounting accessories to simplify installation, including flange adapters, reducers, fishtails, ducting, Y-junctions, etc. Please be sure to keep the correct Filtermist intake diameter in mind when ordering accessories.